

User Manual



DU@Lphone™
Taking internet telephony a step further 3058

Simple,
clear
internet
calls with
Skype™



Cordless
handset

**CALL
FOR FREE**

**EASY
TO USE**



HANTZ + PARTNER

The Upgrade Company! www.hantz.com

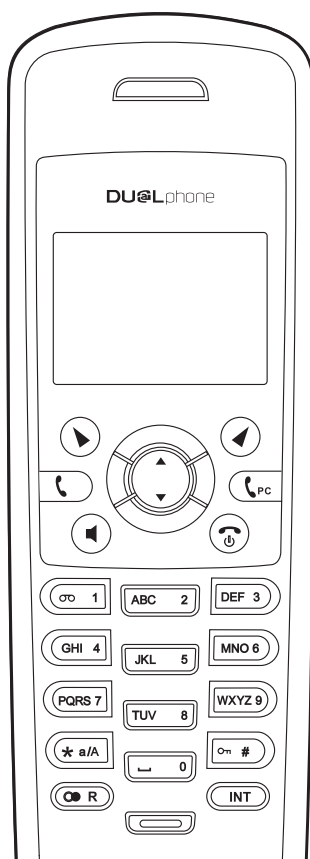


DUALphone™

Taking internet telephony a step further

3058

ENGLISH




USER MANUAL

Dear customer

Thank you for purchasing our product. We hope you will enjoy using it. Please read this User Manual before you start using your new DUALphone 3058. If you experience any difficulties, please consult our support centre at **www.dualphone.net**.

CE Conformity of the telephone with EU directives is confirmed by the CE symbol.
0470 We hereby declare that the DUALphone 3058 comply with the essential requirements and other relevant provisions of the R&TTE Directive 1999/5/EEC. The declaration of conformity is available in the user manual at **www.dualphone.net**.

 The DUALphone 3058 is covered by the European Directive 2002/96/EC which indicates that this product should not be disposed via the normal household waste stream. To prevent possible harm to the environment or human health, please separate this product from other waste streams to ensure that it can be recycled in an environmentally sound manner. For more details on available collection facilities, please contact your local government office or the retailer from whom you purchased this product.

Copyright © 2006 RTX Products A/S. All rights reserved. All forms of copying or reproduction of the product or its associated User Manual are strictly prohibited. This product is manufactured for RTX Products A/S.

Accessories

Approved DUALphone accessories such as batteries, extension kits, headsets etc. can be ordered from authorised dealers.

Intended use

This DUALphone is designed for telephony within a telephone network. Any other use is considered unintended use. Unauthorised modifications or reconstruction not described in this User Manual are not permitted.

Exemption from liability

We cannot guarantee the correctness of the information in this User Manual. The product and its accessories are subject to constant improvement and further development. Therefore, we reserve the right to modify components, accessories, technical specifications and related documentation of the product without notification.

This User Manual serves purely informational purposes. Its contents are not part of any contract of sale. All the data specified relates to nominal values. The equipment and options described may differ from country to country according to national requirements.

Trademarks

- Skype™, SkypeMe™, SkypeOut™, Skypeln™, Skype Voicemail™, the whole world can talk for free™, the Skype logo and the S logo are trademarks of Skype S.A.
- DUALphone™ is a trademark of RTX Products A/S.

In this guide

INSTALLATION	7
Packaging Contents	7
Connecting the base station and power plug	8
Getting Started	8
Installing and charging the batteries	8
Attaching the belt clip	9
System requirements	9
Installing software (from CD)	10
Updating software	18
Uninstalling software	18
User Manual	20
MENU STRUCTURE (HANDSET)	23
HANDSET AND BASE STATION LAYOUTS	26
LCD display	28
LCD icon description	28
USING THE HANDSET	30
Basic operation	30
Power on/off operation	30
Selecting language	30
Making landline external calls (PSTN)	30
Making Skype calls	31
Taking calls	32
Redialling	32
Dialling from the phone book	33
Muting the microphone and ringer	33
Call hold/transfer	33
Party conference	33
Call waiting	33
Changing the earpiece and ring volume	34
Paging the handset	34
Handset speaker phone	34
Key lock	34
Warning signals, confirmation signals	34
Short key definition	34
Call log	35
Browsing, deleting, saving	35
Missed calls, answered calls, dialled calls	35
Deleting	36



PHONE BOOK	37
Searching	37
Storing entries	37
Groups in the phone book	38
Speed dialing	38
Checking the phone book	38
Emergency call	38
Area code	39
HANDSET SETTINGS	40
Ringer type	40
Ringer volume	40
Ringer on/off	40
Prefix	40
Prefix on/off	40
Prefix edit	40
Call barring	41
Message waiting	41
Wallpaper	41
Contrast	42
Key tones	42
Auto answer	42
Handset name	42
Menu style	42
Backlight	43
IP (Skype) contacts	43
Registration	43
De-registration	44
Select base station	44
Default handset settings	44
BASE STATION SETTINGS	45
Base ringer	45
Base ringer on/off	45
Dial mode	45
System PIN	45
Flash time	45
IP (Skype) status	46
Default base settings	46
FUNCTION	47
Games	47
Snake	47
Guess number	47
Timer	47
Set date/time	47
Alarm	47
TROUBLESHOOTING GUIDE	49
CE DECLARATION OF CONFORMITY	56

Installation

■ Packaging Contents

- 1 cordless handset
- 1 base station with USB cable
- 1 power supply for the base station
- 1 telephone cable
- 1 installation CD-ROM
- 1 User Manual (this document)
- 1 credit card-size quick guide
- 2 batteries (AAA; rechargeable)
- 1 safety and warranty sheet
- 1 belt clip

Please check the contents of the package carefully. If anything is missing or shows signs of transport damage, do **not** put your DUALphone into service, but contact your sales outlet with the purchase receipt.

Note:

-
- Keep the equipment packaging so that your DUALphone will not be damaged in the event of transport.
-



■ Connecting the base station and power plug

This is how you connect the plugs to the corresponding sockets in the base station – please note that they cannot be connected incorrectly because the sockets and plugs are designed to prevent reverse poling:

- 1) Lay the cable under the telephone to the rear.
- 2) Plug the telephone line in the telephone connection socket.
- 3) Connect the power supply to the base and into a socket outlet.
- 4) Plug the USB cable into the USB port on your PC.

The base station is now ready to operate.

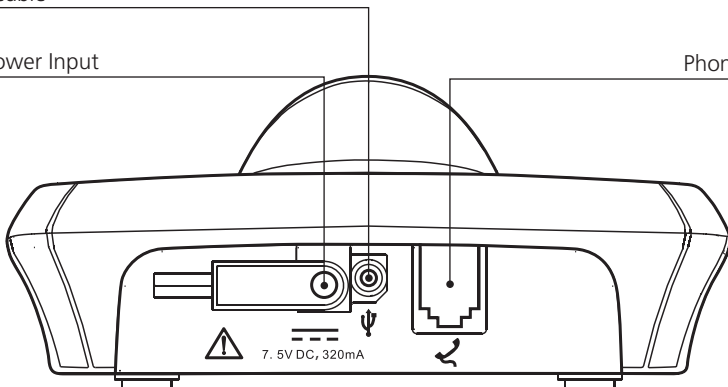
Note:

- Only use the connection cable supplied.

USB Cable

AC Power Input

Phone Jack



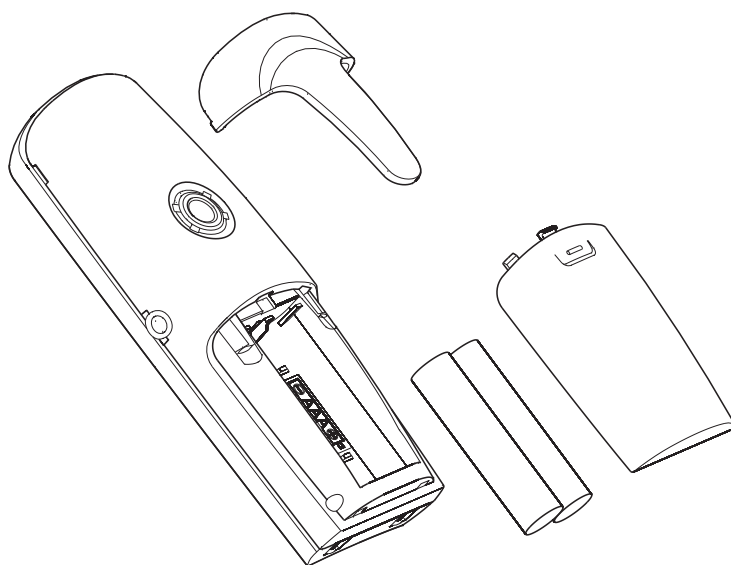
CAUTION:

Plug the adapter into a socket outlet that is close to the equipment and easily accessible. Use only the power supply supplied with the unit. The use of any other power supply may damage the unit.

■ Getting Started

Installing and charging the batteries

- 1) Insert two rechargeable AAA size batteries in the compartment, ensuring correct polarity.
- 2) Close the compartment.
- 3) Place the handset in the base station to charge for 14 hours prior to first use.

**Note:**

- If you do not charge your DUALphone properly, the battery performance will be compromised.

Warning: The handset will not work and will be damaged if the wrong batteries are used.

Attaching the belt clip

- 1) Push the belt clip into the opening on the back of the handset.
- 2) The clip will bend slightly until it clicks into place.

System requirements**Minimum system requirements:**

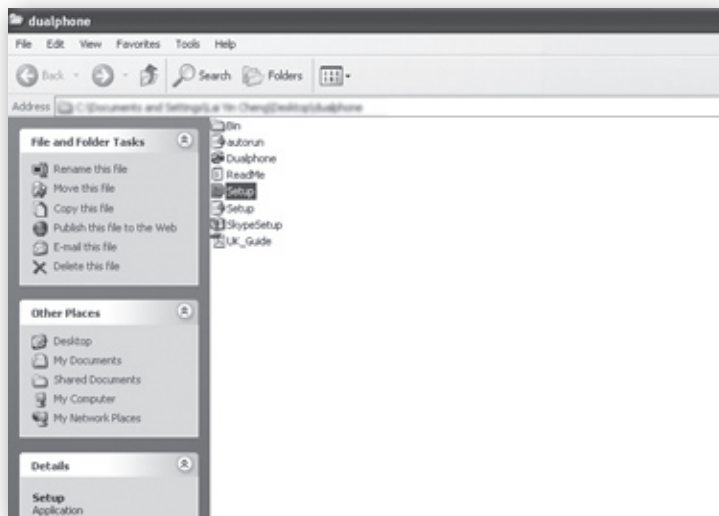
- PC running Windows 2000 or XP operating system
- 400 MHz processor
- 128 MB RAM
- 10 MB free disk space on your hard drive
- Internet connection, either dial-up (minimum 33.6 kbps modem) or any broadband (cable, DSL).

Recommended system requirements:

- PC running Windows 2000 or XP operating system
- 1 GHz processor
- 256 MB RAM
- 30 MB free space on your hard drive
- Cable, DSL or equivalent broadband connection to the Internet
- Standard PSTN line (RJ-11).

Installing software (from CD)

If the installation CD included in the package does not run automatically when inserted into the CD ROM drive of your computer, please open your CD-ROM drive and double-click on **setup.exe** to open the main screen.



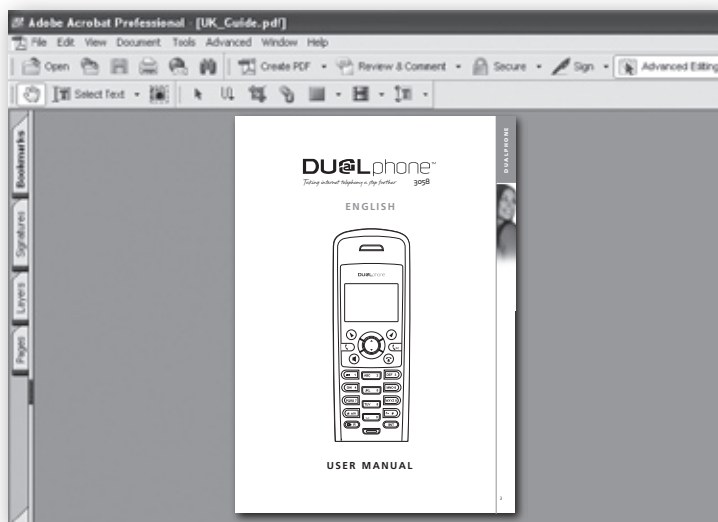
- 1) Select the language you wish to use and click **Continue**.



- 2) If you wish to read the user manual, click on **Open user manual (CD-ROM)**.
A new window will pop up.



If you choose to save the manual, select **File** and then **Save as**. After having saved the PDF file, close the window. To proceed with the installation, click **Continue**.



Note:

- If you would like to have the user manual in a different language, click on the icon **Download user manual (online)**.

- 3) Click **Install from CD-ROM** to proceed.



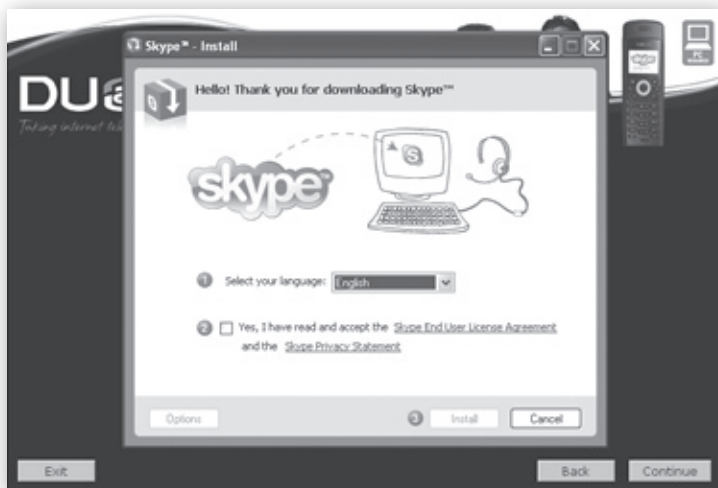
Note:

- If you want to install the latest software, click **Install software (online)**. A new window will pop up. The rest of the installation procedure will then take place over the Internet. When the online installation is completed, click **Exit** to exit the CD-ROM.

- 4) If you do not have Skype installed on your computer, click on the **Skype™** button. The system now prepares to install Skype.



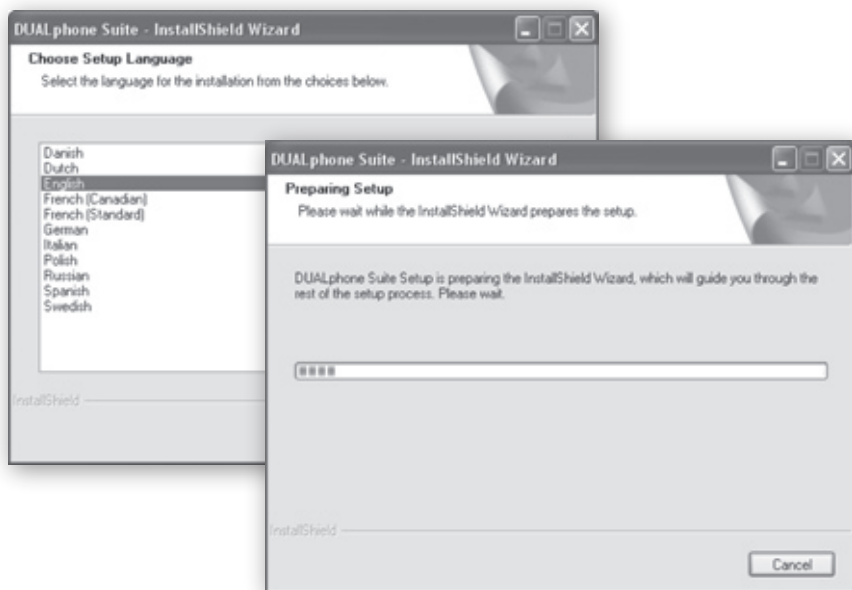
- 5) Please follow the three steps in order to start the installation of Skype.



- 6) Click on **Dualphone Suite** to initiate the DUALphone Suite installation procedure.

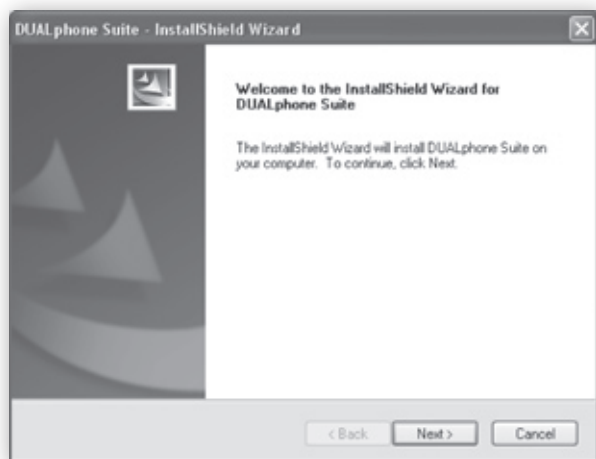


Select the language you wish to use and click **Next**. The system now prepares the setup.

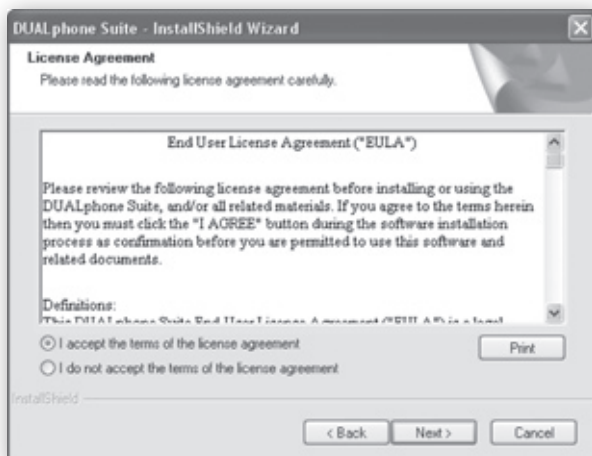


If you wish to stop the software installation then click **Cancel**.

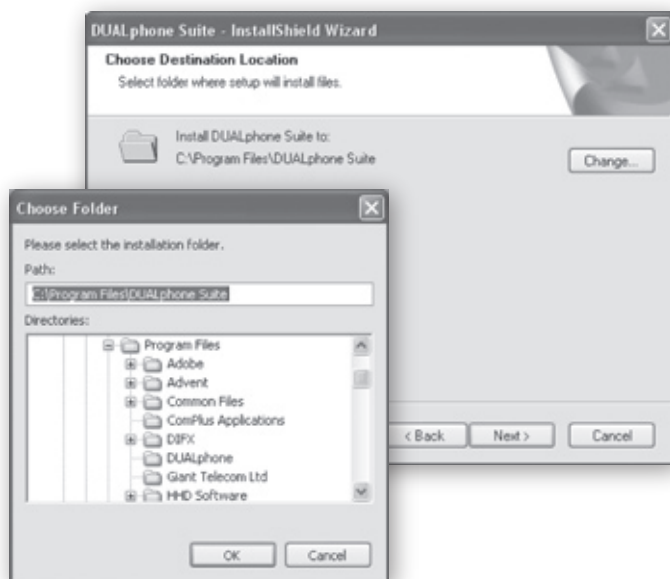
7) Click **Next** to continue or **Cancel** to terminate the procedure.



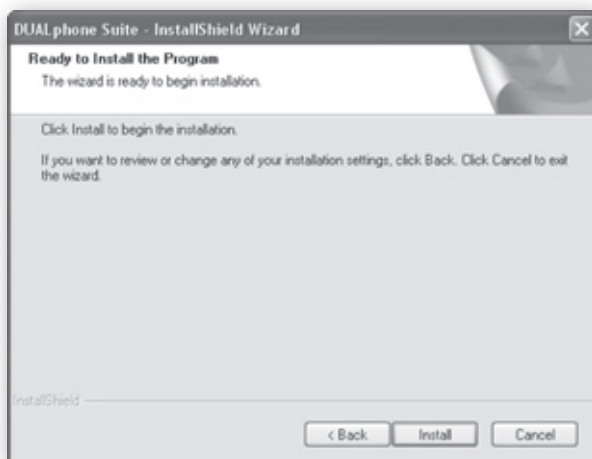
- 8) Select **I accept the terms of the license agreement** and then click **Next** to continue.



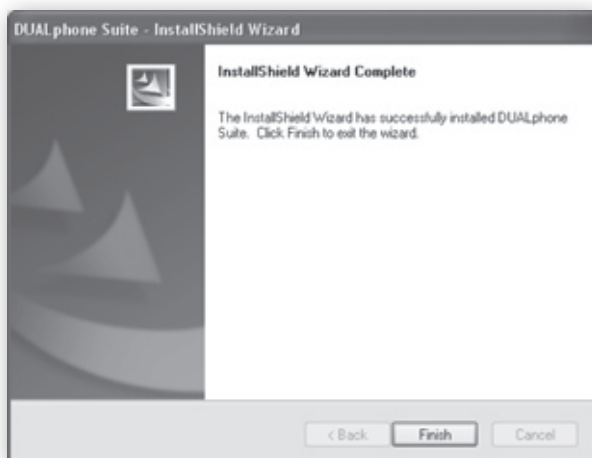
- 9) By default, the installation files will be stored in the directory **C:\Program Files\ DUALphone Suite**. Click **Change...** to change directory, then click **Next** to continue.



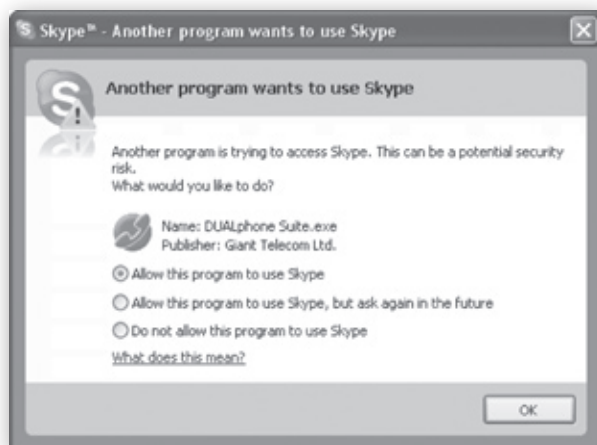
- 10) The following window will be displayed. Click **Install** to continue.



- 11) Your DUALphone Suite has now been installed. Click **Finish** to exit the wizard.



A Skype prompt window may pop up. Select **Allow this program to use Skype** to ensure that the DUALphone Suite works properly with Skype.



- 12) Congratulations! The installation wizard is now complete. Click **Finish** to exit the wizard.



If you wish to learn more about Skype, click on the icon **Skype™ – getting started**.

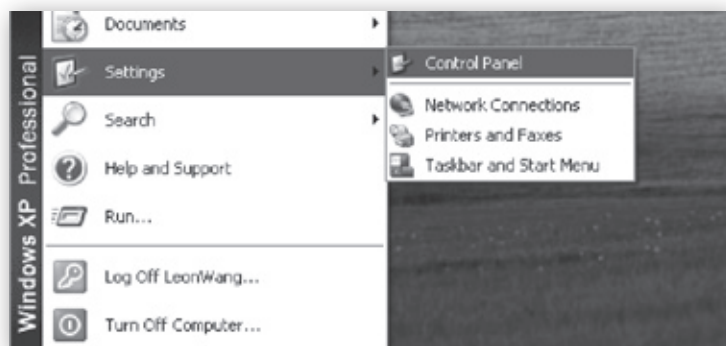
Updating software

- 1) Double-click the DUALphone Suite Monitor icon on your PC desktop.
- 2) Select **Tools**, and click **Start** under **Online update**.
- 3) The software will now be updated automatically.
- 4) After the update, the system will restart and will then be ready for use.

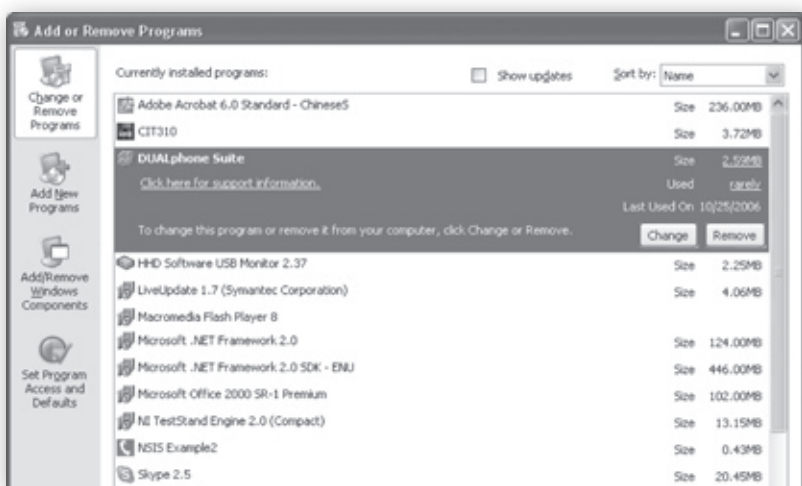
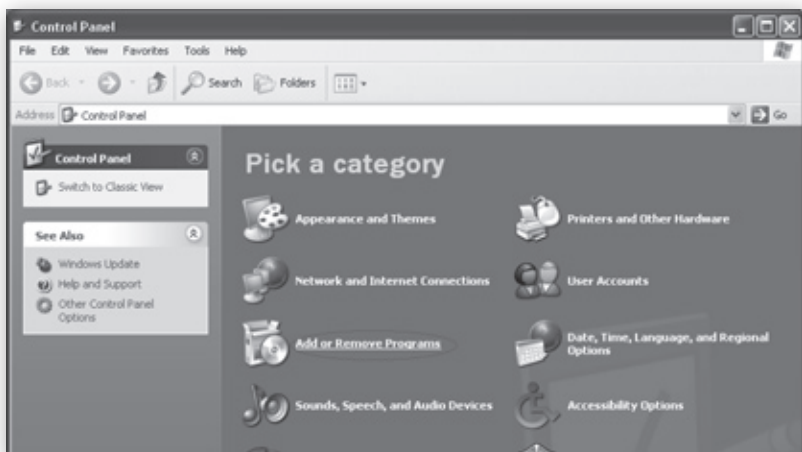


Uninstalling software

- 1) If you choose to uninstall the software from your PC, select **Start**→**Settings**→**Control Panel**.



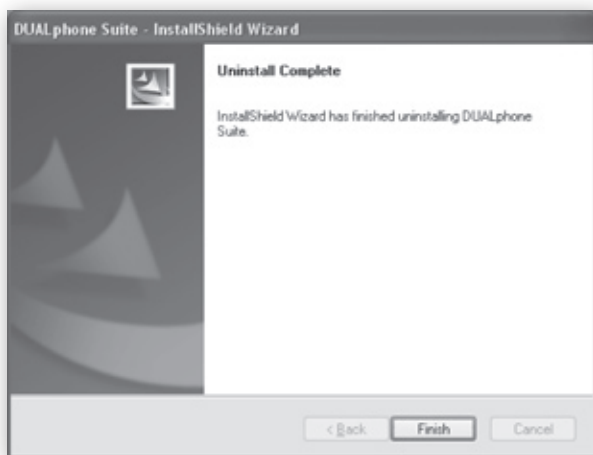
- 2) Select the **Add or Remove Programs** icon, then select **DUALphone Suite** from the list and click **Remove** to uninstall.



- 3) When the message box below is shown, click **Yes** to continue, **No** to cancel.



- 4) After uninstalling the program, click **Finish** to exit the wizard.



User Manual

- 1) When you have finished the entire installation procedure, double-click the **DUALphone Suite Monitor** icon on your PC desktop.
- 2) Select **Status** to view the DUALphone Suite as well as the Skype running status.

If Skype is not installed, you are logged out or logged in, you are offline or your connection is closed, DUALphone Suite will show a status message. Also, it will inform you about the reason, should your DUALphone not connect to Skype.

Under **About**, you will find software information as well as links to support (www.dualphone.net) and user manual (PDF format, different languages).

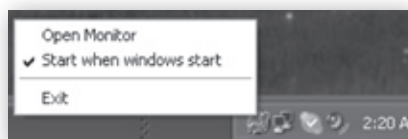


Under **Tools**, you can register/deregister your handset or reset the System PIN code of your base station.



- If you want to register the handset to the base station, just put the handset in the base station and click **Start** under **Registration**. The handset will register automatically.
- If you want to deregister the handset, just select the desired handset number from the drop-down list and click **Start** under **De-Registration**. The handset will de-register automatically.
- If you want to reset the System PIN code of your base station to "0000", just click **Start** under **PIN Reset**.

If you right-click the DUALphone Suite icon, you can select **Open Monitor** and choose whether you want the software to start when Windows starts. Click **Exit** to close.

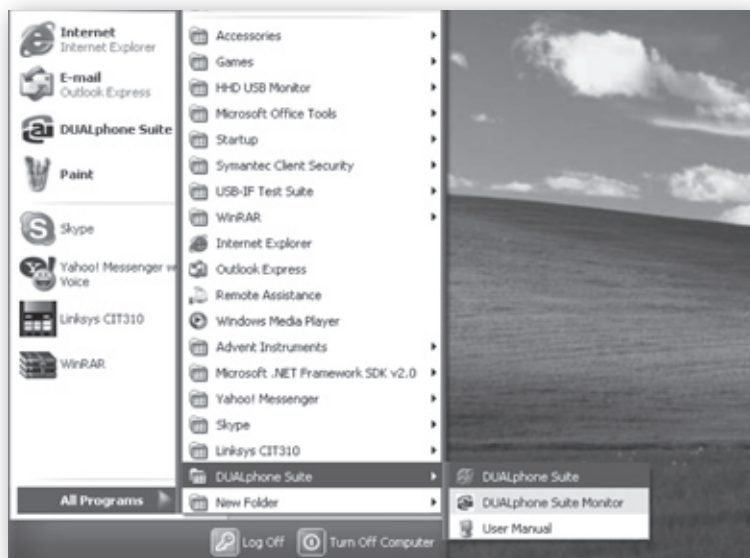


When you want to quit the DUALphone Suite, a window will pop up to ask your ratification.



An electronic User Manual is provided with the product. Its location is as follows:

Start→Programs→DUALphone Suite→User Manual. Also, you can access the user manual from the main screen. Simply click User Manual and retrieve it from the opened folder.

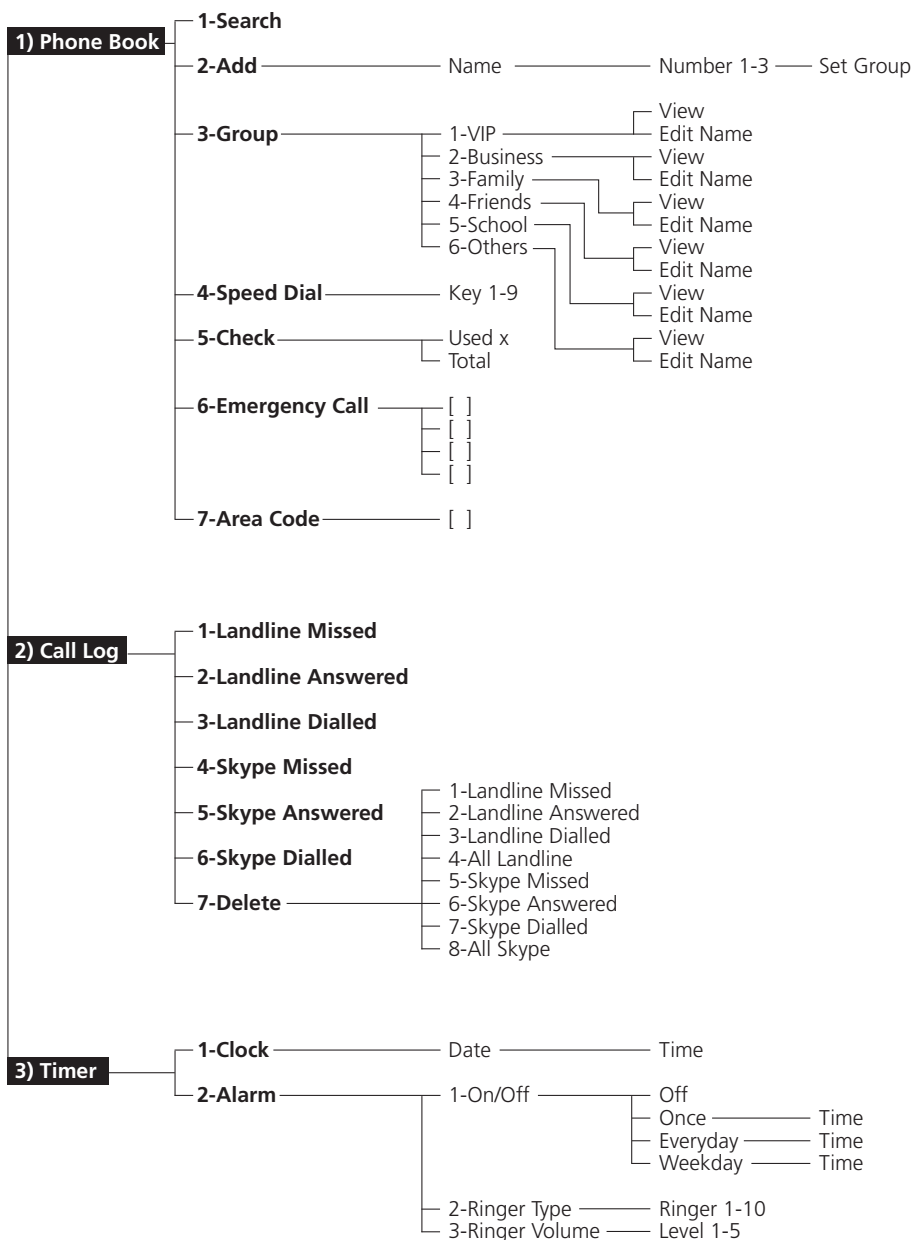


Note:

In order to keep your DUALphone working properly, please check the following:

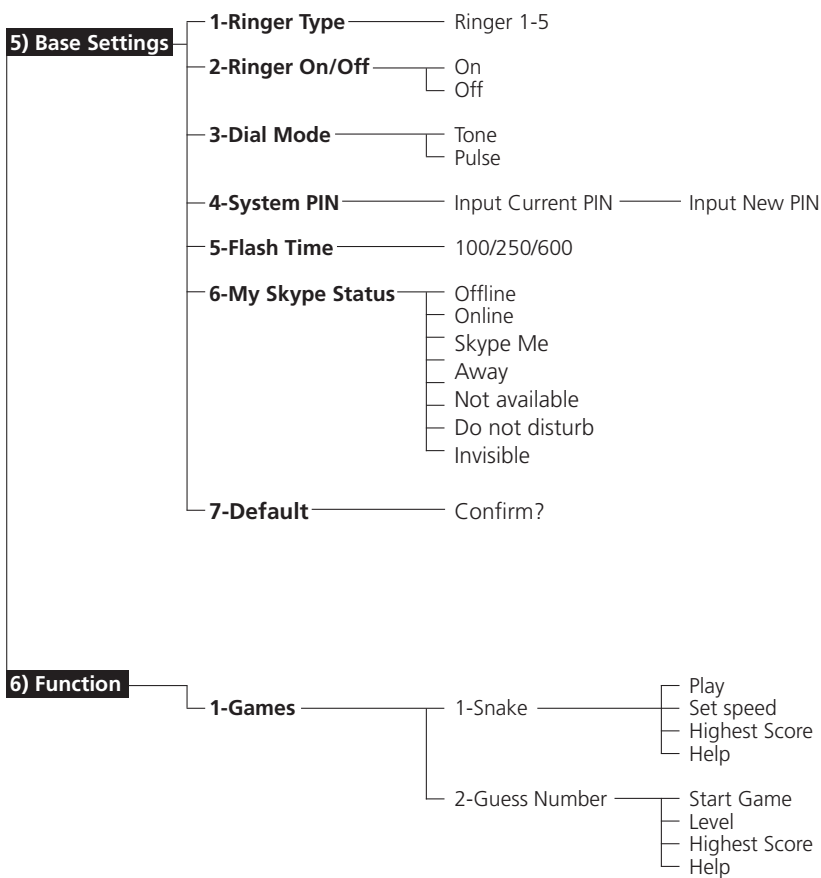
- 1) Your are signed into Skype and it is running,
- 2) Your DUALphone is connected to your PC, and the USB driver is functioning,
- 3) Your PC is not in hibernating mode,
- 4) The Skype software is version 1.4 or later.

Menu Structure (Handset)



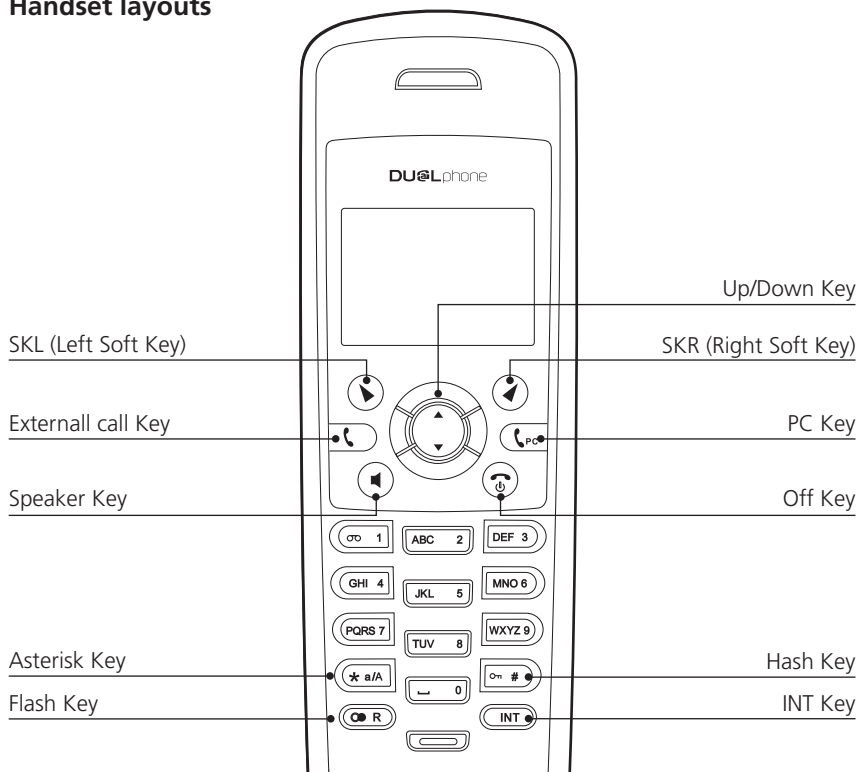
4) Handset Settings

- 1-Language** ————— (The actual languages available will depend on the country version)
- 2-Ringer Type** —————
 - Landline ————— Ringer 1-10
 - Skype ————— Ringer 1-10
 - Intercom ————— Ringer 1-10
 - VIP ————— Ringer 1-10
 - Business ————— Ringer 1-10
 - Family ————— Ringer 1-10
 - Friends ————— Ringer 1-10
 - School ————— Ringer 1-10
 - Others ————— Ringer 1-10
 - Page ————— Ringer 1-10
- 3-Ringer Volume** —————
 - Landline ————— Level 1-5
 - Skype ————— Level 1-5
 - Intercom ————— Level 1-5
 - VIP ————— Level 1-5
 - Business ————— Level 1-5
 - Family ————— Level 1-5
 - Friends ————— Level 1-5
 - School ————— Level 1-5
 - Others ————— Level 1-5
 - Page ————— Level 1-5
 - Ringer On/Off ——— On/Off
 - On
 - Off
- 4-Prefix** —————
 - On/Off
 - Edit ————— Number
- 5-Call Barring** —————
 - System PIN —————
 - Off
 - Landline Call
 - Prefix Call
- 6-Message Waiting** ———
 - Service ————— Number
 - Clear Message
- 7-Wallpaper** ————— Wallpaper 1-3
- 8-Contrast**
- 9-Key Tones** —————
 - On
 - Off
- 10-Auto Answer** —————
 - On
 - Off
- 11-Handset Name**
- 12-Menu Style** ————— Menu style 1-4
- 13-Backlight** —————
 - Normal
 - Power Saving
- 14-Skype Contacts** ———
 - All
 - Online
- 15-Registration** —————
 - Base 1-4 ————— System PIN
- 16-De-Registration** ——— System PIN
- 17-Select Base** —————
 - Base 1-4
 - Auto Base
- 18-Default** ————— Confirm?



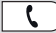







Handset and base stations layouts

Handset layouts

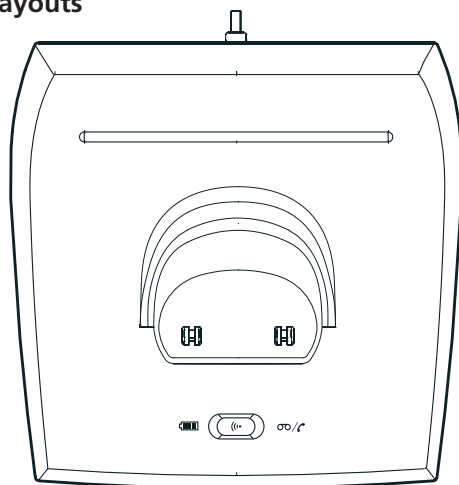


Phone keys




SYMBOL	NAME	USAGE
	SKL	View menu and confirm settings. Mute or un-mute microphone when talking or ringing during incoming call. When playing games use to pause/play.
	SKR	View name. Return to previous menu.
	Up	View content above current. Short-key to enter Missed Calls list.
	Down	View content below current. Short-key to enter Answered Calls list.

	External call	Initiate an external call.
	PC	Enter Skype contacts list in standby mode.
	Speaker	Activate/deactivate hands-free speaker.
	Off	Power on/off. Terminate call. When operating unit, pressing this key can return it to standby mode.
	Flash	Redial. Flash.
	INT	Initiate an intercom connection and pause or hold the external line.
	Asterisk	* digit. Short-key to switch DTMF and Pulse dial mode. Activate Message Waiting Service in standby mode.
	Hash	# digit. Short-key to lock/unlock keyboard. Pause an outgoing call.

Base stations layouts



Base station symbols

SYMBOL	USAGE
	Page key.
	Charging indicator.
	Message Waiting/Incoming call indicator.

■ LCD Display

Main Menu

98x67 (W x H)



Online



Out of Range



Phone Book

Contrast

98x67 (W x H)



Contrast



Contrast Level 3














Contrast Level 4

LCD Icon Description

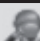





Small icons

ICON	NAME	DESCRIPTION
	Signal	Handset is used within the operational range.
	Key lock	Keypad is locked.
	Line in use	Line is in use.
	Alarm	Alarm is set.
	Ring	External ringer volume is on.
	Battery	Battery level.
	No ring	External ringer volume is off.
	Mute	Microphone or handset ringer is muted.
	Message waiting	Message is waiting.

Skype icons

ICON	NAME	DESCRIPTION
	Online	User is online.
	Offline	User is offline.
	Away	User is away.
	Do Not disturb	User is busy.
	Not Available	User is not available.
	Invisible	User is not visible.
	Skype me	External ringer volume is off.
	PC not available	Microphone or handset ringer is muted.
	Conference	Message is waiting.
	SkypeIn	Type of Skype contact.
	SkypeOut	Type of Skype contact.



Large icons

ICON	NAME	DESCRIPTION
	Phone Book	Phone book can be set.
	Call Log	Call log can be set.
	Timer	Timer settings.
	Handset Settings	Handset settings.
	Base Settings	Base station settings.
	Function	Other functions.

Using the handset

■ Basic Operation

Power on/off operation














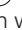

- 1) The handset is powered on by plugging in the battery or by pressing  for two seconds.
- 2) To power off the handset, press  for two seconds.

Note:

-
- If the handset is in the base station, only  and  are functional.
-




Selecting language

Different languages are available for the handset. To select a language:





- 1) Press  to enter the main menu.
- 2) Press  or  to select **Handset Settings**, then  to enter.
- 3) Press  or  to scroll through the menu until **Language** appears.
- 4) Press  to enter language selection.
- 5) Press  or  to select language.
- 6) When English is selected, press  to confirm without additional input language, or press  to add an additional input language, then press  or  to select the additional language and press  to confirm.
- 7) Press  to confirm the selection when selecting another language than English.

Making landline external calls (PSTN)



Post-dialling


- 1) Press  or  and wait for a dialling tone.
- 2) Dial the telephone number.
- 3) Press  to end the call.

Pre-dialling

- 1) Dial the telephone number (up to 24 digits); delete any incorrect entries by pressing .
- 2) Press  or , and the number entered is dialled.
- 3) Press  to end the call.

Note:

-
- If call barring is enabled and the number dialled matches with the barring conditions, you will be prompted that the call is barred. During the conversation you can use  or  to adjust the speaking volume (five levels).
-

-
- The call timer will start counting when the call is connected; the call timer format is HH:MM:SS. After the connection is established, you can view the Phone Book by pressing .
-



Making Skype calls

Making a SkypeOut call



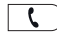

SkypeOut allows you to use your Internet connection to call ordinary telephones and mobile telephones worldwide.

There are two ways to make a SkypeOut call:


Direct dialling

- 1) Dial the number using the format "00/011 + country code + telephone number".
- 2) Press  to dial out the number.
- 3) Press  to end the call.

Dialling from Skype contacts list

- 1) Press , and the first entry in the Skype contacts list appears.
- 2) Press ▼ or ▲ to select the required subscriber from the list. Alternatively, enter the first letter of the name required.
- 3) Press  or  to dial out the selected SkypeOut number.
- 4) Press  to end the call.

Note:

-
- If one call is ended, pressing  can terminate the other call.
-





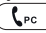
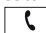



Taking calls

When an external landline call is received, the telephone number of the caller may appear (depending on configuration and network). If the caller has been entered in your phone book, the name may appear.

When a Skype call is received, the incoming Skype username or SkypeIn number will be shown on the screen.

When receiving a landline or Skype call, the handset will ring, and the green LED on the base station will flash.


Handset is in the base station

- 1) Take the handset from the base station, and the connection is automatically established (provided the AUTO ANS function is active). Otherwise, press , ,  or .
- 2) Carry out the conversation.
- 3) Press  to end the call.

Handset is not in the base station

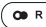
- 1) Press , ,  or  to carry out the conversation.
- 2) Press  to end the call.

Note:

-
- You can reject a call by simply pressing .
-






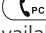



Redialing

Your DUALphone stores up to 20 last dialled landline numbers in the Landline Dialed Log and an unlimited number of dialled Skype usernames or SkypeOut numbers in the Skype Dialed Log.










Press  to view the dialled calls or use the user menu (see **Call Log** for details).

Note:

-
- If there are no records in the Dialed Call Log, there will be no information on the display, and you will automatically be returned to the main menu.
-

- 1) Press  or  to select the desired type of dialled call.
- 2) Press  to confirm your selection.
- 3) Press  or  to select the desired record.
- 4) Press  or  to redial the desired record. If Skype Dialed is selected,  is also available.
- 5) Press  to end the call.

Dialling from the Phone Book




- 1) Press , and the first entry in the Phone Book appears (alternatively the text **No Records** if you have no entries) – or access the Phone Book through the user menu (see **Phone Book** for details).
- 2) Press  or  to view the name list or enter the first letter of the name to quick search an entry.
- 3) Press  to view the details.
- 4) Press  or  to select the required number.
- 5) Press  or  to dial the number.
- 6) Press  to end the call.

Muting the microphone and ringer

- Press  to switch the microphone on or off during a call.
- Press  to switch the ringer on or off during ringing.



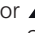

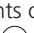


Call hold/transfer

If your DUALphone is connected to a PABX network, it is possible to put external landline calls on hold and transfer them to other extensions.

- 1) Press  to put the call on hold.
- 2) Enter the extension number you want, and the extension called will ring.
- 3) Press  again if you would like to take back the call, or  to transfer the call.

Party conference




Skype conference call

- 1) Press  to enter the Skype contacts list.
- 2) Press  or  to view the contacts, and press  to select participants one by one (up to four Skype users can be chosen to join the conference). Press  again to cancel a selected party from the conference group.
- 3) Press  to start the conference call.
- 4) Press  to disconnect from the conference call, allowing the others to continue with the external call.

Call waiting

During an ongoing call you can always start a new call by pressing the corresponding button.

Note:

-
- You can press  to terminate the ongoing Skype call and turn to the landline call or press  to release the landline call and turn to the Skype call. If one call is ended, pressing  can terminate the other call.
-



Changing the earpiece and ringer volume

Press ▼ or ▲ as often as necessary to change the earpiece and ringer volume during a call.

Paging the handset

If the handset has been misplaced, it is possible to call it by pressing ☎ on the base station. Pressing any key will stop the handset page ring.

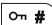

Handset speaker phone

Press 🔊 to activate or deactivate the handset speaker.

Key lock

Lock/unlock the handset keypad by pressing and holding  for two seconds.

Note:

- Incoming calls can still be received and the alarm can be turned off by pressing any key. Only  and  are functional when the keypad is locked.

Warning signals, confirmation signals


Key tone	Acoustic signal when a key is pressed. Can be switched off (see Handset Settings).
Low battery charge	If a low battery condition is detected, the handset will beep every 30 seconds, and the empty battery icon will be displayed on the screen.
Out of range	When the handset is too far away from the base station, the text Out of Range will be displayed on the screen.
PC Not Available	When Skype cannot be accessed successfully, the PC Not Available icon will be displayed and activate an error tone.


Short-key definition


There are six short-keys: ▼, ▲, , ,  and .


In standby mode, press ▼ to enter the Answered Call log.

In standby mode, press ▲ to enter the Missed Call log.

In standby mode, press , to access the Skype Contacts list.

In standby mode, press , to access the intercom menu.

In standby mode, press , to access the Dialed Call log.

In standby mode, press , to access the landline Phone Book.





■ Call Log

Browsing, deleting, saving

IMPORTANT: To use the **Call Log** function, you must subscribe to your network operator's Caller Line Identification (CLI) service.








Missed calls, answered calls, dialled calls

There are six types of call logs: Landline missed, Landline answered and Landline dialled, Skype missed, Skype Answered and Skype dialled. Each landline log can contain up to 20 records while the Skype logs are unlimited.





- 1) Press  to enter the main menu.
- 2) Press  or  to select Call Log, then press  to enter the log.

Note:










-
- If there are no records in the call log, there will be no information on the display, and you will automatically be returned to the main menu.
-

- 1) Press  or  to select the desired call log type, then press  to confirm.
- 2) Press  or  to find the desired record.
- 3) Press  to view detailed information (date/time).
- 4) Press .

The Landline Call logs operate as follows:

- 1) Press  or  to select **Save** or **Delete**.
- 2) Press  to confirm, or press  to back up.

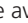



If you select **Save**:

- 1) Press  or  to select a location in which to store the number, then press  to confirm.
- 2) Press   to switch input method.
- 3) Press  to confirm.
- 4) Press  or  to select a group, then press  to confirm.

If you select **Delete**:

- 1) Simply press  key to confirm.

Note:

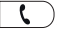
-
- Short-keys are available in standby mode: Press  to access the Missed Call log, press  to access the Received Call log, and press  to access the Dialled Call log. In the Skype call logs, just press  to delete the selected entry.
-



Deleting

- 1) Press ▼ or ▲ to select **Delete** through the submenu **Call Log**, then press ⏏.
- 2) Press ▼ or ▲ to select one type of calls or all calls.
- 3) Press ⏏ to delete the desired records, or pres ⏏ to go back.

Note:

-
- When viewing the records, press , and the highlighted record will be recalled immediately.
-



Phone Book

Your DUALphone can store up to 100 entries in the Phone Book with three numbers for each name. Store frequently used numbers in order to be able to dial them quickly and easily. When the function is supported by the telephone provider, the handset displays the name of the caller (when stored in the Phone Book).











You can access the Phone Book directly from standby mode by pressing .

■ Searching




Press  or  to select **Phone Book** through the main menu, then press  to access.

Note:


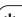
- If there are no records in the Phone Book, no information will be displayed, and you will automatically be returned to the main menu.




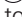



- 1) Press  or  to select **Search**, then press .
- 2) Enter the index character or the desired name, then press .
- 3) Press  or  to select the desired name, then press .
- 4) Press  or  to view the name and numbers.
- 5) Press  to edit the name and numbers, delete the entry or change the group.

■ Storing entries

- 1) Press  or  to select **Add** through the submenu **Phone Book**, then press .
- 2) Enter the name (maximum 16 characters).

Note:

- To enter the characters, press the relevant key the corresponding number of times, according to the position on the key. For example, press the digit **5** three times for the letter **L**. Delete incorrect entries by pressing . Press  **a/A** to switch between number, lowercase and uppercase.

- 1) Press  to confirm.
- 2) Enter the number (maximum 24 digits), and press  to confirm.
- 3) Enter a second number, then press  to confirm.
- 4) Enter a third number, and press  to confirm.
- 5) Press  or  to select the group.
- 6) Press  to confirm and complete storing the entry.

**Note:**

- If all the memory slots are occupied, the text **Memory Full** appears in the display. You can also store entries in the Phone Book by pressing digit keys to enter a number in standby mode, then pressing to save the number. Alternatively, you can save a number in the Phone Book through the call log (see **Call Log Operation**).

■ Groups in the Phone Book

- 1) Press or to select **Group** through the submenu **Phone Book**, then press .
- 2) Press or to select one of the groups, then press to access.
- 3) Press or to select **View** or **Edit Name**.
- 4) Press to view the details of the group or edit the group name.

Note:

- When viewing the details of the group, you can edit the names and numbers in the group, change the group and delete entries.

■ Speed dialling

- 1) Press or to select **Speed Dial** through the submenu **Phone Book**, then press .
- 2) Press or to select the speed dial key (1→9), then press to confirm.
- 3) Press or to select **Phone Book** or **Delete**, then press to confirm.
- 4) Under **Phone Book**, press or to select a number to set as speed dial number, then press to confirm.
- 5) Under **Delete**, press to delete the speed dial number.
- 6) To dial the defined speed dial number, press and hold the corresponding speed dial key in standby mode until the dial number appears on the screen.

■ Checking the Phone Book

- 1) Press or to select **Check** through the submenu **Phone Book**.
- 2) Press to view the used memory slots and total memory slots.



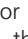


■ Emergency call

- 1) Press or to select **Emergency Call** through the submenu **Phone Book**, then press .
- 2) Press or to select the location of the emergency call, then press .
- 3) Enter the emergency call number, and press to confirm.

Note:

- The emergency call number can be edited and dialled even when the keypad is locked.

■ Area code

- 1) Press  in standby mode to view the submenus under **Phone Book**.
- 2) Press  or  to select **Area Code**.
- 3) Press , then type the digits and press  again to confirm (maximum five digits).

Note:

- Edit the area code using the same procedure.



Handset Settings

■ Ringer type

- 1) Press ▼ or ▲ to select **Handset Settings** through the main menu, then press ⏵ to access.
- 2) Press ▼ or ▲ to select **Ringer Type**, then press ⏵.
- 3) Press ▼ or ▲ to select the desired selection, then press ⏵.
- 4) Press ▼ or ▲ to select one of 10 melodies, then press ⏵ to confirm.

■ Ringer volume

- 1) Press ▼ or ▲ to select **Ringer Volume** through the submenu **Handset Settings**, then press ⏵.
- 2) Press ▼ or ▲ to select the desired selection, then press ⏵.
- 3) Press ▼ or ▲ to adjust the ringer volume (five levels), then press ⏵ to confirm.

■ Ringer on/off

- 1) Press ▼ or ▲ to select **Ringer Volume** through the submenu **Handset Settings**, then press ⏵.
- 2) Press ▼ or ▲ to select **Ringer On/Off**, then press ⏵.
- 3) Press ▼ or ▲ to select, then press ⏵ to confirm.

■ Prefix

Prefix on/off

- 1) Press ▼ or ▲ to select **Prefix** through the submenu **Handset Settings**, then press ⏵.
- 2) Press ▼ or ▲ to select On/Off, then press ⏵.
- 3) Press ▼ or ▲ to select, then press ⏵ to confirm.

Prefix editing

- 1) Press ▼ or ▲ to select **Edit** through the submenu **Prefix**, then press ⏵.
- 2) Enter the prefix number (maximum five digits), then press ⏵ to confirm.

Note:

- If a prefix number exists and the prefix function is turned on, the entered prefix number must be dialled first when making an external call.



■ Call barring

- 1) Press ▼ or ▲ to select **Call barring** through the submenu **Handset Settings**, then press ⏏.
- 2) Enter System PIN (default setting = 0000), then press ⏏.
- 3) Press ▼ or ▲ to select **Off**, **Landline Call** or **Prefix Call**, then press ⏏ to confirm.

Note:

- **Off** = all outgoing calls are allowed; **Landline Call** = all outgoing external calls are barred; **Prefix Call** = all outgoing calls matched with prefix number are barred.

■ Message waiting

If you subscribe to a voice messaging service, the green LED light on the base station will flash to alert you if you have a message waiting. To hear your messages, contact your voice messaging service provider.

Note:

- For quick dialling, you can store the voice messaging service number on you DUALphone. To dial the programmed number, press and hold (* a/A) for two seconds.

To store/dial the voice messaging service number:

- 1) In the Handset Settings menu, press ▼ or ▲ to display **Message Waiting**, then press ⏏ to select.
- 2) Press ▼ or ▲ to display **Service**, then press ⏏ to confirm.
- 3) Enter the number of your messaging service provider, then press ⏏ to confirm.
- 4) Press ☎ to dial the number.
- 5) Press ⏏ to return to standby mode.

Clearing messages

To turn off the green LED light when you have listened to you messages:

- 1) In the Handset Settings menu, press ▼ or ▲ to display **Message Waiting**, then press ⏏ to select.
- 2) Press ▼ to display **Clear Message**, then press ⏏ to confirm.
- 3) Press ⏏ to return to standby mode.

■ Wallpaper

- 1) Press ▼ or ▲ to select **Wallpaper** through the submenu **Handset Settings**, then press ⏏.
- 2) Press ▼ or ▲ to select **Wallpaper 1**, **Wallpaper 2** or **Wallpaper 3**.
- 3) Press ⏏ to view the wallpaper.
- 4) Press ⏏ again to confirm the selection.



■ Contrast

- 1) Press ▼ or ▲ to select **Contrast** through the submenu **Handset Settings**, then press ⏏.
- 2) Press ▼ or ▲ to adjust the contrast level, then press ⏏ to confirm.

■ Key tones

- 1) Press ▼ or ▲ to select **Key Tones** through the submenu **Handset Settings**, then press ⏏.
- 2) Press ▼ or ▲ to select **Off** or **On**, then press ⏏ to confirm.

■ Auto answer

- 1) Press ▼ or ▲ to select **Auto Answer** through the submenu **Handset Settings**, then press ⏏.
- 2) Press ▼ or ▲ to select **Off** or **On**, then press ⏏ to confirm.

■ Handset name

- 1) Press ▼ or ▲ to select **Handset Name** through the submenu **Handset Settings**, then press ⏏.
- 2) Enter the handset name and press ⏏ to confirm.

Note:

• Key assignment overview:

1	[1] [-?!,.&=:#" \$]	7	[7] [p q r s] [P Q R S]
2	[2] [a b c] [A B C]	8	[8] [t u v] [T U V]
3	[3] [d e f] [D E F]	9	[9] [w x y z] [W X Y Z]
4	[4] [g h i] [G H I]	0	[0] [space]
5	[5] [j k l] [J K L]	*	Switch key
6	[6] [m n o] [M N O]	#	[*+%@(){}; _'^]

Press *** a/A** to switch between number, lowercase and uppercase.

■ Menu style

- 1) Press ▼ or ▲ to select **Menu Style** through the submenu **Handset Settings**, then press ⏏.
- 2) Press ▼ or ▲ to select **Menu Style 1**, **Menu Style 2**, **Menu Style 3** or **Menu Style 4**, then press ⏏ to confirm.

Note:

- When a specific colour scheme is selected, the background colour will be changed to the corresponding colour.

■ Backlight

- 1) Press ▼ or ▲ to select **Backlight** through the submenu **Handset Settings**, then press ⏏.
- 2) Press ▼ or ▲ to select **Normal** or **Power Saving**, then press ⏏ to confirm.

Note:

- If **Power Saving** is chosen, the backlight will be on for 15 seconds – if **Normal** is selected, it will be on for 30 seconds. During an incoming call, the backlight will always be on. When the alarm rings, the backlight will be on for five seconds. After a call is ended, the backlight will be on for three seconds.

■ Skype contacts

- 1) Press ▼ or ▲ to select **Skype Contacts** through the submenu **Handset Settings**, then press ⏏.
- 2) Press ▼ or ▲ to select **All** (all contacts will be displayed) or **Online** (only online users will be displayed), then press ⏏ to confirm.

■ Registration

- 1) Press ▼ or ▲ to select **Registration** through the submenu **Handset Settings**, then press ⏏.
- 2) Press ▼ or ▲ to select a specific base (1→4), then press ⏏.
- 3) Enter the System PIN (default setting = 0000).
- 4) Press ⏏ to register the handset.
- 5) Press and hold ⏏ on the base station for two seconds.

Note:

- The base station(s) to which the handset is already registered will be indicated by **. Once the registration procedure is complete, the new handset will automatically be allocated the next available handset number. This number will be shown on the display under the signal icon.





■ De-registration

- 1) Press ▼ or ▲ to select **De-Registration** through the submenu **Handset Settings**, then press ⏏.
- 2) Enter the System PIN (default setting = 0000).
- 3) Press ▼ or ▲ to select a specific handset (1→4), then press ⏏.
- 4) Press ⏏ again to confirm.

■ Selecting base station

- 1) Press ▼ or ▲ to select **Select Base** through the submenu **Handset Settings**, then press ⏏.
- 2) Press ▼ or ▲ to select a specific base station or auto base, then press ⏏ to confirm.

Note:

-
- The base station(s) to which the handset is already registered will be indicated by **, and the base station you are using will be highlighted.
-

■ Default handset settings

- 1) Press ▼ or ▲ to select **Default** through the submenu **Handset Settings**, then press ⏏.
- 2) Press ⏏ again to reset to the default settings, or press ⏏ to cancel.

Base station settings

■ Base ringer

- 1) Press ▼ or ▲ to select **Base Settings** through the main menu, then press ⏵ to confirm.
- 2) Press ▼ or ▲ to select **Ringer Type**, then press ⏵.
- 3) Press ▼ or ▲ to select **Ringer 1**, **Ringer 2**, **Ringer 3**, **Ringer 4** or **Ringer 5**, then press ⏵ to confirm.

■ Base ringer on/off

- 1) Press ▼ or ▲ to select **Ringer On/Off** through the submenu **Base Settings**, then press ⏵.
- 2) Press ▼ or ▲ to select **Off** or **On**, then press ⏵ to confirm.

■ Dial mode

- 1) Press ▼ or ▲ to select **Dial Mode** through the submenu **Base Settings**, then press ⏵.
- 2) Press ▼ or ▲ to select **Tone** or **Pulse**, then press ⏵ to confirm.

■ System PIN

- 1) Press ▼ or ▲ to select **System PIN** through the submenu **Base Settings**, then press ⏵.
- 2) Enter the current PIN (default setting = 0000), then press ⏵.
- 3) Enter the new PIN, then press ⏵.
- 4) Enter the new PIN again, then press ⏵ to confirm.

■ Flash time

- 1) Press ▼ or ▲ to select **Flash Time** through the submenu **Base Settings**, then press ⏵.
- 2) Press ▼ or ▲ to select **100**, **250** or **600**, then press ⏵ to confirm.





■ Skype status

- 1) Press ▼ or ▲ to select **My Skype Status** through the submenu **Base Settings**, then press ⏮.
- 2) Press ▼ or ▲ to select desired status, then press ⏮ to confirm.

■ Default base settings

- 1) Press ▼ or ▲ to select **Default** through the submenu **Base Settings**.
- 2) Press ⏮ to reset to the default settings or press ⏭ to cancel.

Function

■ Games

Your DUALphone contains two games, Snake and Guess number.

Snake

- 1) Press ▼ or ▲ to select **Game** through the submenu **Function**, then press ⏮ to confirm.
- 2) Press ▼ or ▲ to select **Snake**, then press ⏮ to confirm.
- 3) Enter **Play** to start the game.
- 4) Enter **Set speed** to choose from five speed levels – press ▼ or ▲ to adjust and ⏮ to confirm or ⏭ to cancel setting.
- 5) Enter **Highest Score** to view historic highest score (it will be cleared after power off).
- 6) Enter **Help** to get operation help for the game.

Guess number

- 1) Press ▼ or ▲ to select Game through the submenu Function, then press ⏮ to confirm.
- 2) Press ▼ or ▲ to select Guess number, then press ⏮ to confirm.
- 3) Enter Start Game to start the game.
- 4) Enter Level to choose difficulty levels – use ▼ or ▲ to select **High**, **Medium** or **Low** and ⏮ to confirm or ⏭ to cancel setting.
- 5) Enter **Highest Score** to view historic highest score (it will be cleared after power off).
- 6) Enter **Help** to get operation help for the game.

■ Timer

Setting date/time





- 1) Press ▼ or ▲ to select Clock through the submenu Timer, then press ⏮.
- 2) Enter the date, then press ⏮.
- 3) Enter the time, then press ⏮ to confirm the date/time setting.

Alarm

- 1) Press ▼ or ▲ to select **Alarm** through the submenu **Timer**, then press ⏮.
- 2) Press ▼ or ▲ to select **Alarm**, then press ⏮.
- 3) Press ▼ or ▲ to select **On/Off**, **Ringer Type** or **Ringer Volume**.
- 4) Press ⏮ to confirm the relevant settings.





**Note:**

-
- If you select **On/Off**, there are four options: **Off**, **Once**, **Everyday** and **Weekday**. To set **Off**, simply press  to confirm. To set one of the three other items, you need to set the time (see **Setting date/time** for details). If you select **Ringer Type** or Ringer **Volume**, press  or  to select your desired selection, then press  to confirm. Once the alarm is set, the alarm icon will appear in the top icon bar.
-

Troubleshooting Guide

Should you forget the base station System PIN, follow this procedure to reset the units.

Note: All memory and settings will be lost at resetting.

- 1) Disconnect AC Power supply.
- 2) Hold  and plug in the AC power supply (Hold until line in-use LED is on).
- 3) Release  and hold it again until you hear 3 beeps.
- 4) Disconnect AC power supply and Plug in it again.
- 5) The unit will return to its default System PIN code (0000).

Note:

- Please follow User Manual to register the handset again.

If you can not make/receive Skype calls after installation

Cause 1: The USB plug is not connected to your PC.

Solution: Connect the USB plug to the PC.

Cause 2: The base station does not work.

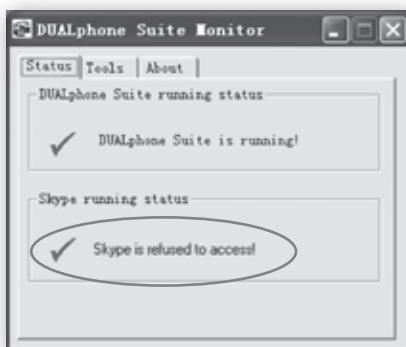
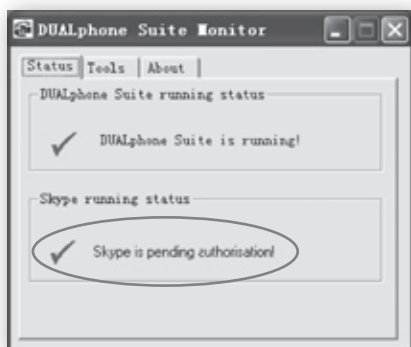
Solution: Check whether the power adaptor is connected to base station.

Cause 3: The Skype software is not running.

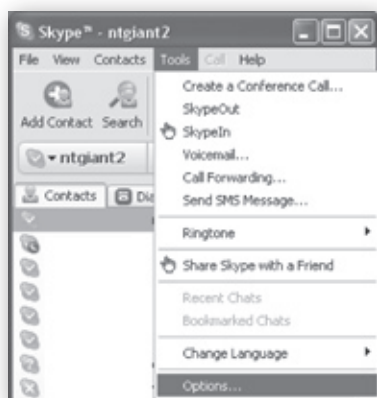
Solution: Run Skype software and sign in.

Cause 4: The DUALphone Suite is not running correctly.

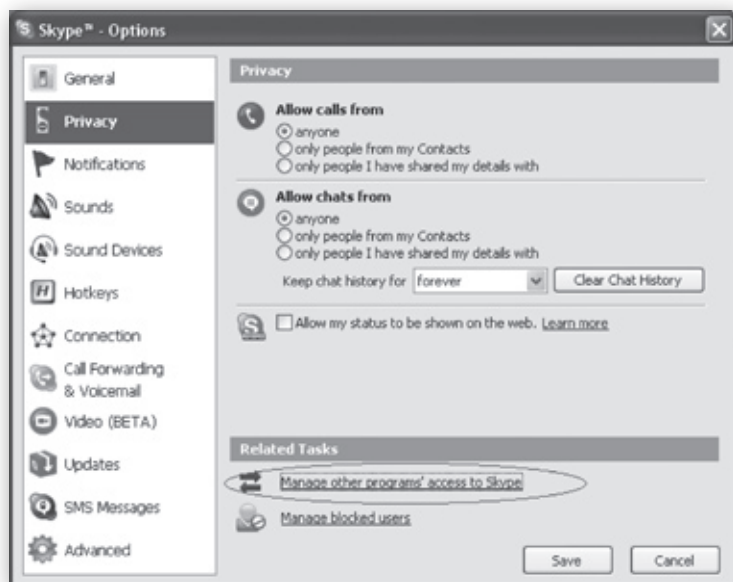
Solution: Follow these steps:



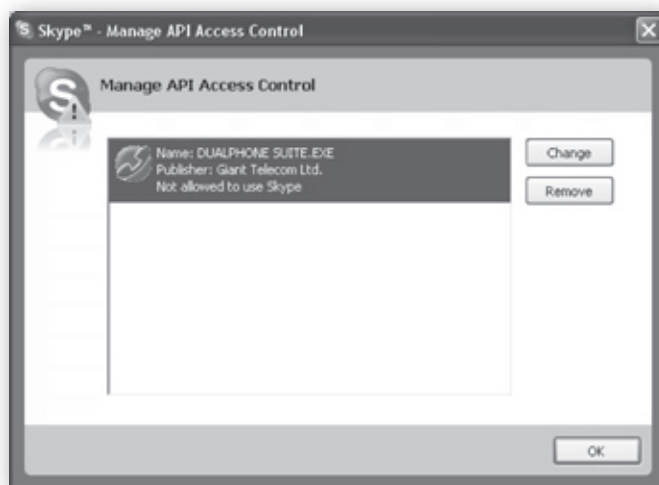
- 1) Go to the **Skype** menu: **Select Tools→Options.**



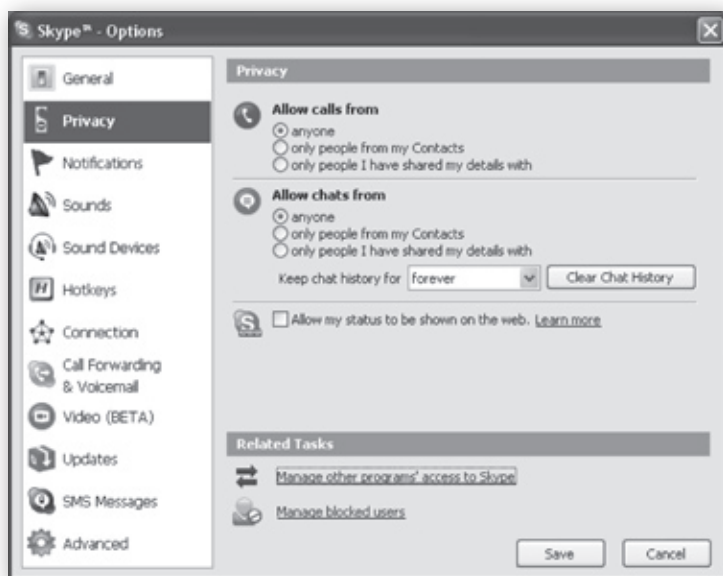
- 2) Select **Privacy→Manage other programs' access to Skype.**



- 3) Select **DUALphone Suite**, then click **Change**.




- 4) A window will pop up, asking you to select **Allow this program to use Skype**. Press **OK**.
- 5) Click **Save** to save the option selected.







Troubleshooting – General

PROBLEM	POSSIBLE CAUSE
The registration does not work	<ul style="list-style-type: none"> • The handset and the base station were not prepared for registration. • The handset or the base station has not been entered into registration mode. • The base station is registered full.
No display	<ul style="list-style-type: none"> • The battery is empty.
No reactions to keystroke	<ul style="list-style-type: none"> • The keypad is locked.
No radio connection to the base station – the LED is blinking	<ul style="list-style-type: none"> • The handset is outside the base station range. • The handset is not registered. • The base station does not work.
No dial tone when pressing 	<ul style="list-style-type: none"> • The base station is not powered on. • The handset is too far from the base station. • The line is not connected to the base station.
No signal icon	<ul style="list-style-type: none"> • The handset is not registered • The handset is out of range of the base station.
When the handset is placed in the base station, no beep is heard	<ul style="list-style-type: none"> • The handset is not placed properly in the base station. • The charging contacts are dirty. • The base station is not powered on.
The battery icon remains empty although the handset has charged for 14 hours	<ul style="list-style-type: none"> • The handset's batteries are defective. • The handset is not placed properly in the base station.
I cannot hear the other party clearly or the speaker is too loud/quiet	<ul style="list-style-type: none"> • The volume on the handset is too low.
The phone does not ring when a call comes in	<ul style="list-style-type: none"> • The ringer may be set off.



SOLUTION

	<ul style="list-style-type: none"> • Unplug and then plug in the power adapter. • See User Manual for correct registration of base station and handset. • Press  on the base station to page the registered handsets, then perform the deregistration operation. Finally, register the handset you want to use.
	<ul style="list-style-type: none"> • Charge the batteries, or replace them (see Battery charging).
	<ul style="list-style-type: none"> • Press  a/A for longer than two seconds.
	<ul style="list-style-type: none"> • Move closer to the base station. • Register the handset (see Registering handset). • Check if the power adapter is connected to the power outlet (220-230V AC / 50 Hz) and the other end is connected to the power jack on the base station bottom.
	<ul style="list-style-type: none"> • Check the power adaptor connection. • Move the handset closer to the base station. • Plug in the line.
	<ul style="list-style-type: none"> • Register the handset. • Move the handset closer to the base station.
	<ul style="list-style-type: none"> • Take the handset out of the base station and put it back again. • Clean the charging contacts with a clean and dry cloth. • Verify that the base station is powered on.
	<ul style="list-style-type: none"> • Buy new rechargeable batteries. • Make sure the battery icon is scrolling – otherwise put the handset back in the base station.
	<ul style="list-style-type: none"> • Adjust the volume.
	<ul style="list-style-type: none"> • Verify that the ringer is on.



Troubleshooting – Skype

PROBLEM	POSSIBLE CAUSE
The CD-ROM cannot run automatically	
Contact list/user status returns PC Not Available message	<ul style="list-style-type: none">• Please check as follows: If the base station is powered on.• If the USB driver is functioning properly and the USB plug is connected successfully.• If you are signed into Skype.• If the DUALphone Suite is running and shows that the connections are successful.
I cannot call an ordinary phone number	<ul style="list-style-type: none">• 00/011 or country code is omitted.• Your Skype account has too little or no credit.• The handset loses its link.
Bad audio quality	<ul style="list-style-type: none">• There may be interference from nearby electrical appliances.• The base station is installed in a room with thick walls, or the handset is too far away from the base station.• The quality of the network is not good, or the audio device is not good enough.



SOLUTION

	<ul style="list-style-type: none"> • Right-click the icon of your CD driver, then select Open. Double-click the DUALphoneSetup.exe file to enter the installation process.
	<ul style="list-style-type: none"> • Start and sign into Skype. • Make sure the DUALphone Suite is installed and running. • Verify that the USB driver is functioning properly and the USB plug is properly connected. • Verify that the setting of Skype can allow DUALphone Suite to access it.
	<ul style="list-style-type: none"> • Enter 00/011 and country code before the number dialled. • Buy more Skype credits. • Verify that the link is successful.
	<ul style="list-style-type: none"> • Move the PC to a different location. • Move the handset closer to the base station. • Get an audio device with higher quality.

CE DECLARATION OF CONFORMITY

This product is manufactured for RTX Products A/S. Please also refer to the introduction in the User Manual, guarantee and safety & warranty information sheet.

The DUALphone 3058 comply with the requirements of EC directives:

99/5/EC Directive for radio facilities and telecommunication terminals

The presumption of conformity with essential requirements regarding Council Directive 99/05/EC is assured according to:

R&TTE Directive 99/05/EC Standard: EN301406 V 1.5.1

The DUALphone 3058 is in conformity with the below mentioned directives:

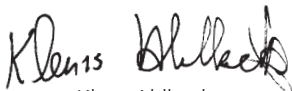
EMC	Directive 89/336/EC	Standard: EN301489 – 1 V 1.5.1 Standard: EN301489 – 6 V 1.2.1
Safety	Directive 73/23/EC	Standard: EN60950 – 1:2001 (1st edition)
SAR	Recommendation 99/519/EC	Standard: EN50360, EN50385

Due to existing differences between public telecommunication networks in different states, this authentication does not constitute in itself an unconditional guarantee for successful operation of these units on every network terminal point.

Intended use:

The DUALphone 3058 is designed to switch onto the analogue telephone network via the normal telephone socket and USB interface on a PC connected to a broadband connection. Any other use is deemed as not intended use. The company does not accept claims resulting from unauthorised alterations or modifications not described in this user manual.

Denmark, Noerresundby, 01-11-2006



Klaus Ahlbeck

RTX Products A/S
Stroemmen 6
9400 Noerresundby
Denmark
Telephone: +45 96322300
Fax: +45 96322310



P/N 6008111, v. 1.0